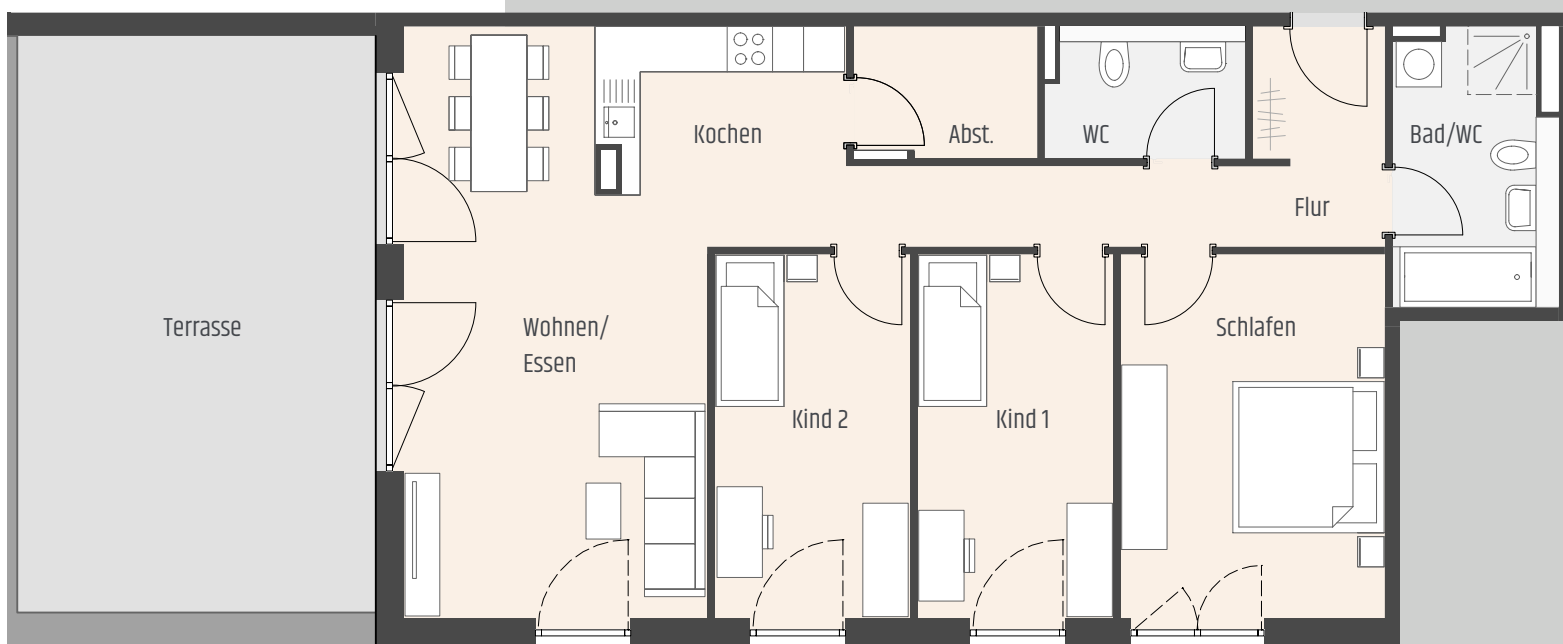


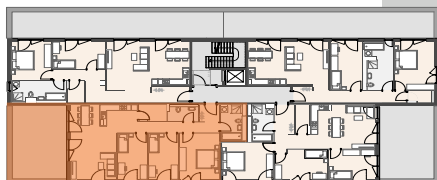
## 4 Zimmer Penthouse



### Highlights



Ansicht Ost



Lageplan

### Wohnfläche

Wohnen/Essen	28,03 m <sup>2</sup>
Kochen	8,40 m <sup>2</sup>
Schlafen	16,73 m <sup>2</sup>
Kind 1	12,44 m <sup>2</sup>
Kind 2	12,34 m <sup>2</sup>
Bad/WC	7,42 m <sup>2</sup>
WC	4,25 m <sup>2</sup>
Flur	10,67 m <sup>2</sup>
Abst.	4,10 m <sup>2</sup>
Terrasse (50%)	18,80 m <sup>2</sup>

123,18 m<sup>2</sup>

M 1:100

