

## 3 Zimmer Etagenwohnung

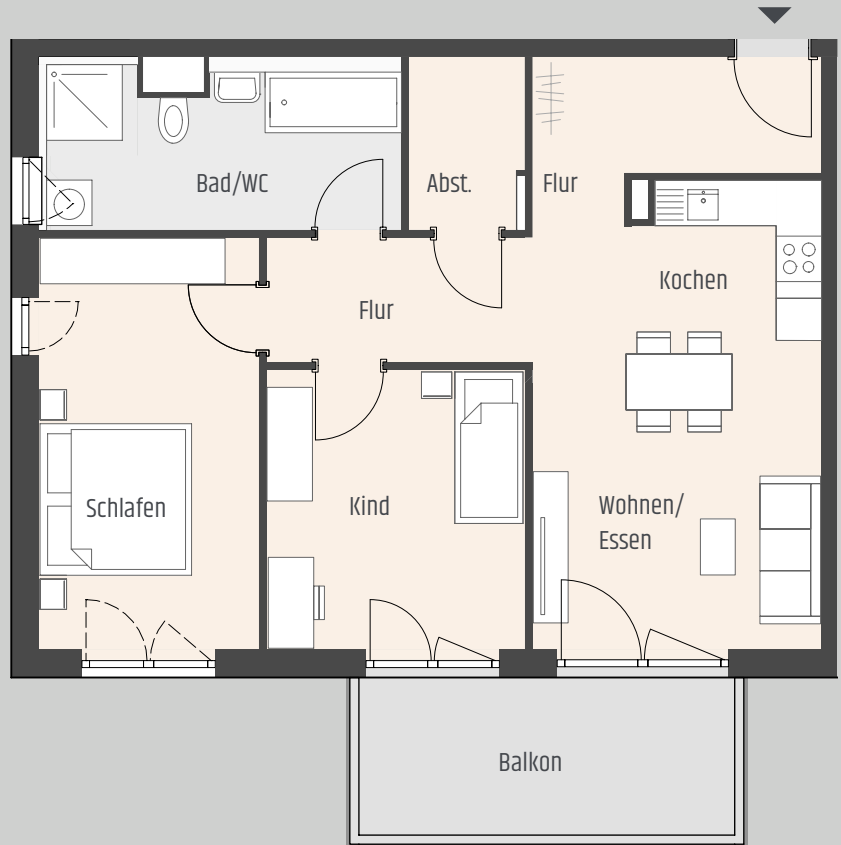
### Highlights



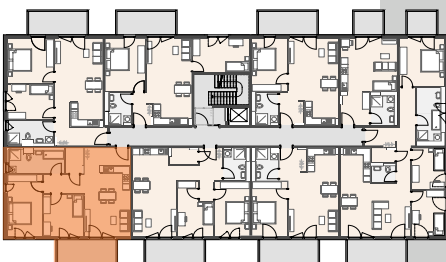
### Wohnfläche

Wohnen/Essen	17,68 m <sup>2</sup>
Kochen	4,94 m <sup>2</sup>
Schlafen	15,73 m <sup>2</sup>
Kind	12,55 m <sup>2</sup>
Bad/WC	10,01 m <sup>2</sup>
Flur	12,36 m <sup>2</sup>
Abst.	3,36 m <sup>2</sup>
Balkon (50%)	5,67 m <sup>2</sup>

82,30 m<sup>2</sup>



Ansicht Ost



Lageplan

M 1:100

